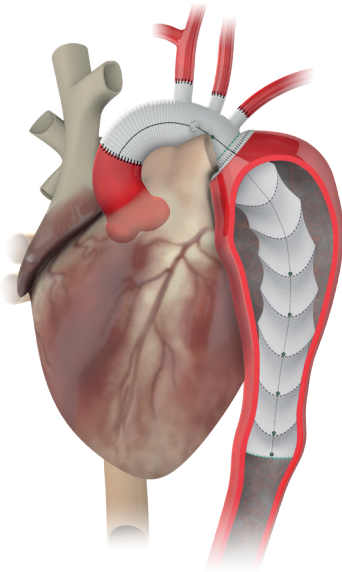


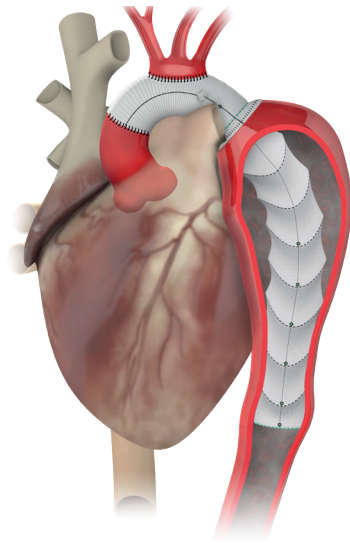
thoraflex™ hybrid

TERUMO
Aortic

The **ONLY** branched Frozen Elephant Trunk Device with Plexus and Ante-Flo™ configurations



Thoraflex™ Hybrid Plexus facilitates individual arch vessel reconstruction¹



Thoraflex™ Hybrid Ante-Flo™ configuration facilitates the **Island Technique**²



Delivery system designed for intuitive and accurate deployment^{2,3}



Earlier re-warming, reduced myocardial ischaemia, lower body ischaemia and operating times^{1,3,4}

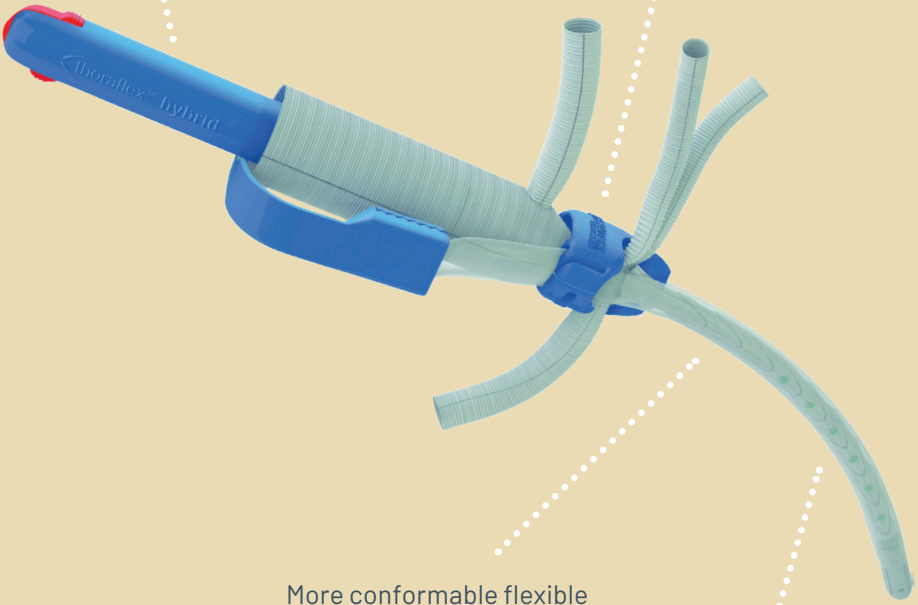


One-stage operation for the patient²

Plexus and Ante-Flo™ designs enable a choice of surgical techniques and widen the treatable patient population²

Compact design aids delivery system control³

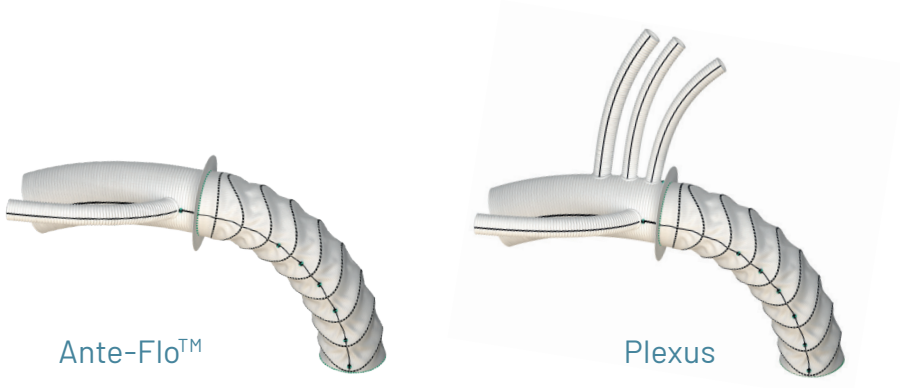
More intuitive rapid release sheath splitter clip mechanism designed for enhanced deployment performance²



More conformable flexible shaft allowing easier shaping to suit patient anatomy and system trackability²

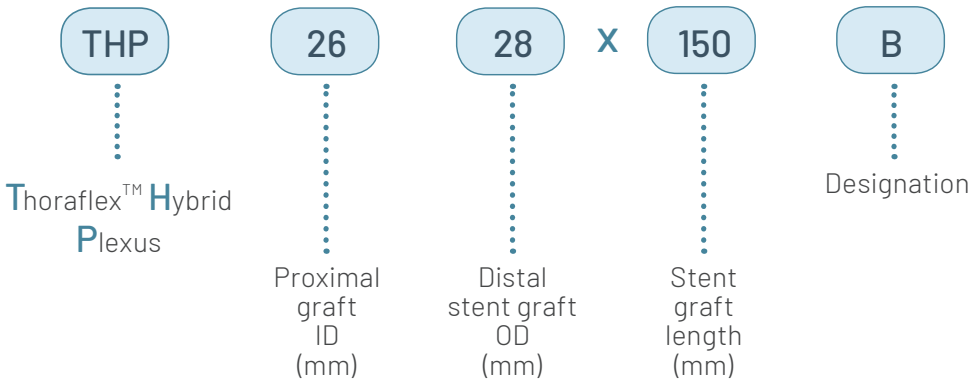
Smaller 24 and 26mm distal stents enable a larger patient population to be treated²

“ Implantation of the Thoraflex™ Hybrid device resulted in excellent outcomes and beneficial aortic remodelling during follow-up. ”⁵



Thoraflex™ Hybrid used for the Frozen Elephant Trunk technique allows earlier patient re-warming, reduces myocardial ischaemia, lower body ischaemia and operating times.^{1,3,4}

Catalogue Number Explanation

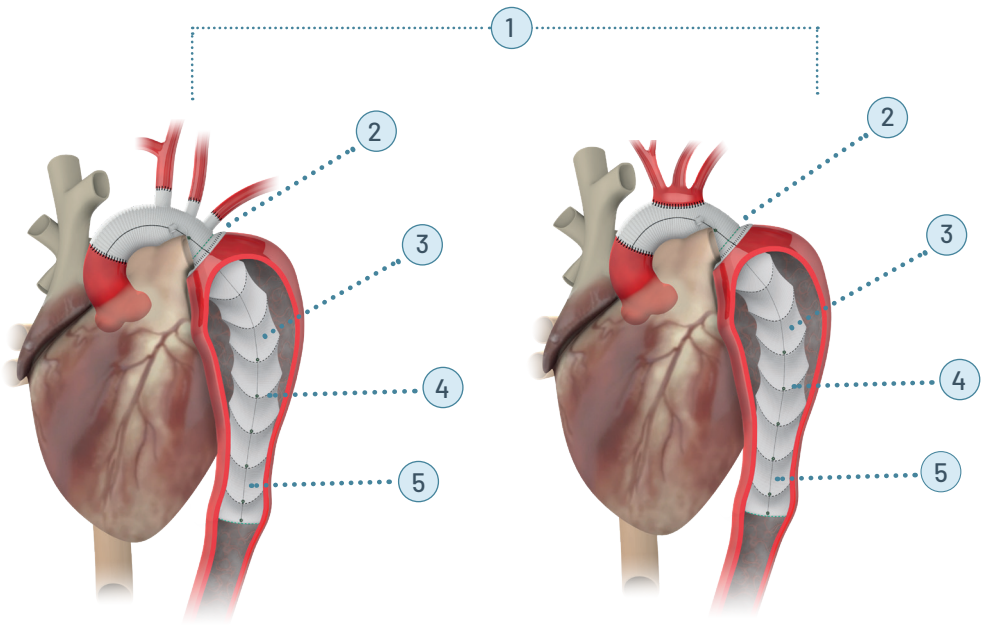


Note:

- (i) Refer to IFU for full technical product details.
- (ii) Approximately 20mm between radiopaque markers.

Plexus

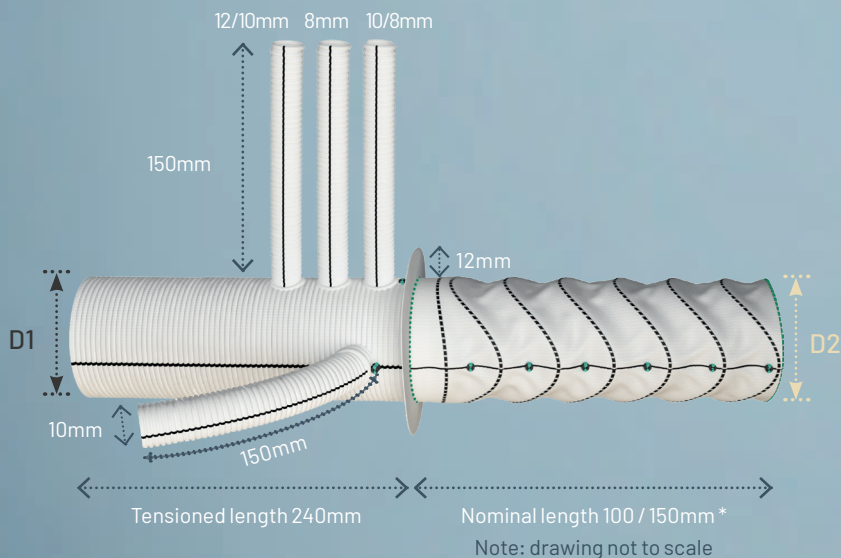
Ante-Flo™



- 1 Choice of Plexus and Ante-Flo™ designs for individual arch vessel reconstruction or the **Island Technique**^{1,2}
- 2 Gelweave™ Siena Collar ensures **easier and safer anastomosis** of the prosthesis to the aorta reducing the haemodynamic traction on the anastomosis³
- 3 **New smaller 24 and 26mm** stent options
- 4 Radiopaque markers **simplify secondary procedures if needed**²
- 5 Multiple independent ring stent design allows **excellent anatomical conformability**⁶

Plexus Product Ordering Information

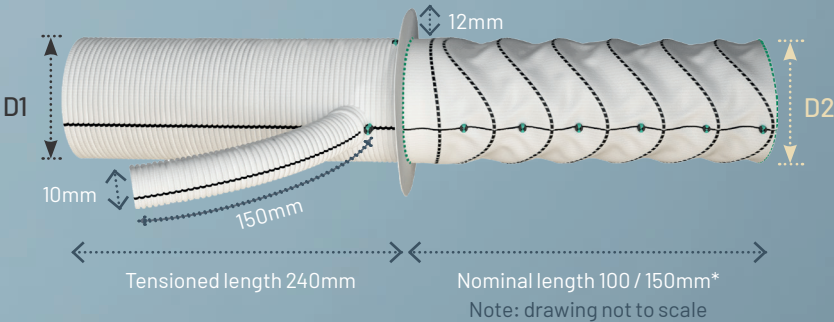
CATALOGUE NUMBER	MAIN GRAFT ID (mm) D1	ARCH BRANCH DIAMETERS ID (mm)	STENT GRAFT OD (mm) D2	NOMINAL STENT LENGTH (mm)*
THP2224 x 100B	22	10/8/8	24	100
THP2426 x 100B	24	10/8/8	26	100
THP2628 x 100B	26	12/8/10	28	100
THP2830 x 100B	28	12/8/10	30	100
THP3032 x 100B	30	12/8/10	32	100
THP3034 x 100B	30	12/8/10	34	100
THP3036 x 100B	30	12/8/10	36	100
THP3038 x 100B	30	12/8/10	38	100
THP3040 x 100B	30	12/8/10	40	100
THP3240 x 100B	32	12/8/10	40	100
THP2224 x 150B	22	10/8/8	24	150
THP2426 x 150B	24	10/8/8	26	150
THP2628 x 150B	26	12/8/10	28	150
THP2830 x 150B	28	12/8/10	30	150
THP3032 x 150B	30	12/8/10	32	150
THP3034 x 150B	30	12/8/10	34	150
THP3036 x 150B	30	12/8/10	36	150
THP3038 x 150B	30	12/8/10	38	150
THP3040 x 150B	30	12/8/10	40	150
THP3240 x 150B	32	12/8/10	40	150



Ante-Flo™ Product Ordering Information

CATALOGUE NUMBER	MAIN GRAFT ID (mm) D1	STENT GRAFT OD (mm) D2	NOMINAL STENT LENGTH (mm)*
THA2224 x 100B	22	24	100
THA2426 x 100B	24	26	100
THA2628 x 100B	26	28	100
THA2830 x 100B	28	30	100
THA3032 x 100B	30	32	100
THA3034 x 100B	30	34	100
THA3036 x 100B	30	36	100
THA3038 x 100B	30	38	100
THA3040 x 100B	30	40	100
THA3240 x 100B	32	40	100
THA2224 x 150B	22	24	150
THA2426 x 150B	24	26	150
THA2628 x 150B	26	28	150
THA2830 x 150B	28	30	150
THA3032 x 150B	30	32	150
THA3034 x 150B	30	34	150
THA3036 x 150B	30	36	150
THA3038 x 150B	30	38	150
THA3040 x 150B	30	40	150
THA3240 x 150B	32	40	150

* Nominal stent length quoted. Stent graft length may have some slight tolerance variance and can vary based on individual patient anatomy eg. tortuosity.



References

1. Di Marco L *et al.* **The Thoraflex™ Hybrid frozen elephant trunk device: the Bologna experience.** *J Vasc Endovasc Surg*, 2014; 21(3), 117-23.
2. **Clinical evaluation report for Thoraflex™ Hybrid device design dossier 019**, Issue 4, Feb 2016.
3. Ruggieri VG *et al.* **Multibranched hybrid device for frozen elephant trunk: what does it change?** *J Thoracic & Cardiovasc Surg*, July 2015; 15(1), 253-255.
4. Maselli D *et al.* **Frozen elephant trunk with Thoraflex™ Hybrid prosthesis: early results of the prospective THORA-FET registry.** AATS Aortic Symposium, May 2016, NY, USA.
5. Shrestha M *et al.* **Total aortic arch replacement with a novel 4-branched frozen elephant trunk prosthesis: single-centre results of the first 100 patients.** *J Thoracic and Cardiovasc Surg*, July 2016; 152(1), 148-159.
6. Shrestha M *et al.* **Innovative products and emerging implantation techniques. First-in-man results with a novel 4-branched elephant trunk graft for total aortic arch replacement.** EACTS Symposium, Oct. 2011.

Product availability subject to regulatory approval.

The logo for Terumo Aortic, featuring a stylized white swoosh above the word "TERUMO" in a bold, sans-serif font, with "Aortic" in a smaller, lowercase sans-serif font below it.

VASCUTEK Ltd
Newmains Avenue, Inchinnan
Renfrewshire, PA4 9RR Scotland, UK
T. +44 (0) 141 812 5555
terumoaortic.com

B336/3E